



## COASTAL HDX-20

### Production

For-A HVS-390 Hanabi Switcher  
2 M/Es available, 16 input, 8 output  
(4) Keyers per ME, (4) DVEs, (4) Chroma Keyers, ImageStore

### Records

(2) AJA KiPro HDD Recorders  
Wired for up to (8) AJA KiPros  
(1) AJA HELO H.264 Recorder

### Graphics Facilities

(1) Mac Mini running Playback Pro

### Terminal Equipment

40x40 Blackmagic Design HD/ASI Router  
(2) For-A Multiviewers  
(1) Blackmagic Design Multiviewer  
(2) AJA FS-1  
Frame syncs on all switcher inputs

### Camera Equipment

Wired for up to 6 CCUs  
Camera configs built to event spec

### Support

(2) Fostex Speakers  
(3) Throwdown HD Monitors  
(2) SDI-HDMI Converters  
(2) Fiber Rattler Sets  
(2) Decimator MD-Cross Converters

### Transmission

2.4m AVL Uplink Antenna 4-Port Feed  
(2) 300-watt Ku MCL 3200 TWT  
(4) Ateco Kyrion CM5000 Encoder w/ remux  
(6) Adtec RD60 Decoder  
(1) DirecTV HD DSS Receiver  
Multichannel Mux Available

### Communications

RTS Cronus 64 Matrix Intercom System  
(4) RTS PL Channels  
(6) RTS Telephone Interface  
(4) Wet IFB Channels  
(2) Verizon cellular phone lines  
(1) Verizon data connection

### Audio Facilities

Yamaha TF3 Digital Audio Console  
24 Fader 24x16 NY64-D audio  
16 input / 8 output remote stagebox

### Cable Inventory

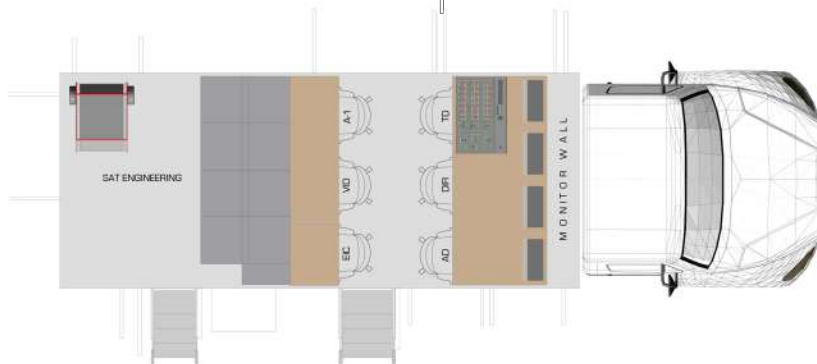
500' TAC-8  
1395' BNC  
1340' XLR  
1180' Ethernet  
470' Edison

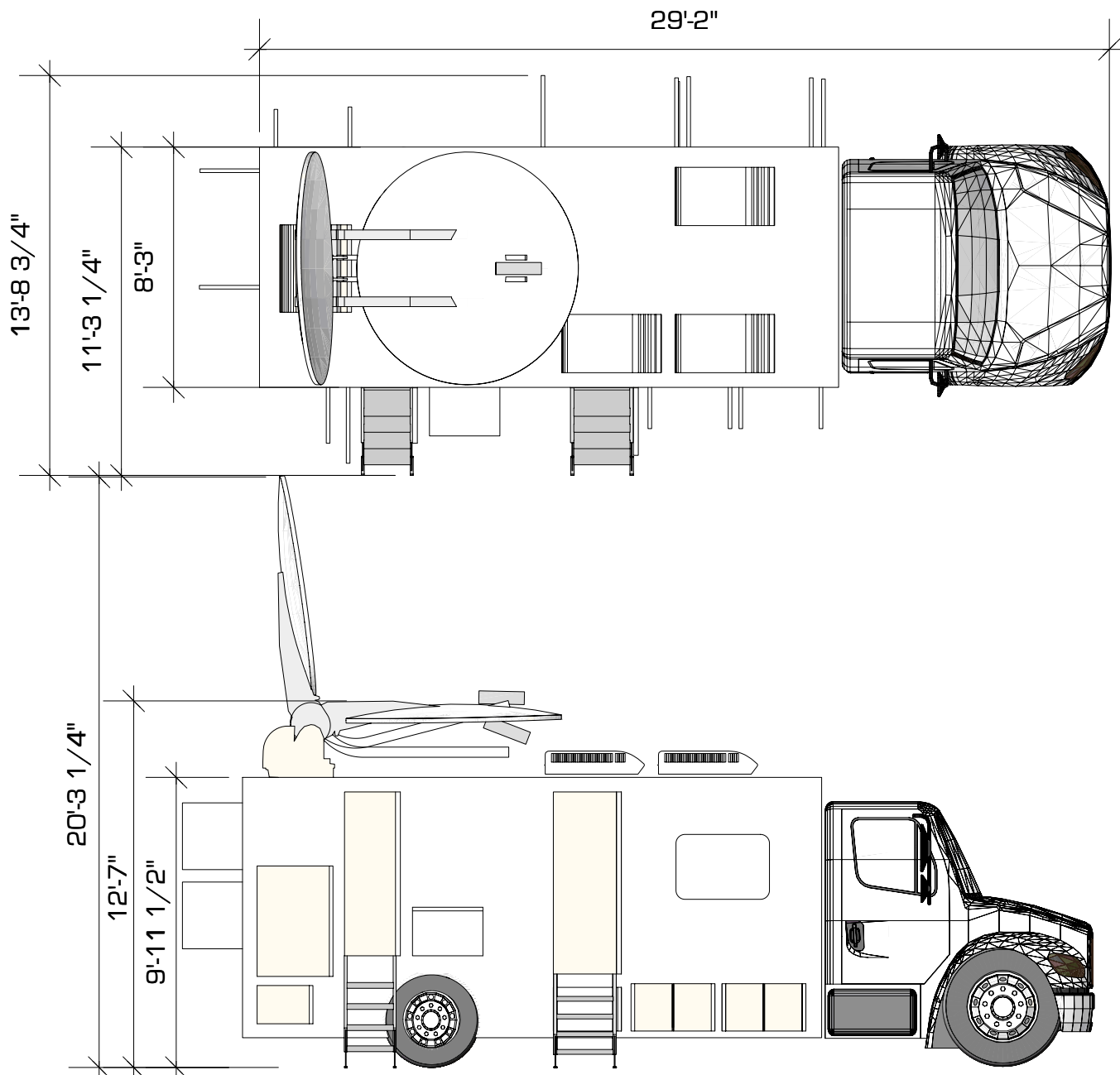
### Power Requirements

Single phase, 80 Amps, 208 Volts  
2 Hot Legs, 1 Ground, (No neutral required)  
100' feeder cable with camlock connectors  
20kW Generator On Board

### Truck Dimensions

GVW – 26,000 Lbs  
Dimensions – 29ft L, 9ft W, 13.5ft H working footprint





① HDX-20 COASTAL-3 TNDV 3D 2020  
Scale: 1:20



LMG  
515 Brick Church Park Drive  
Nashville TN 37207

HDX-20 COASTAL-3  
KU UPLINK

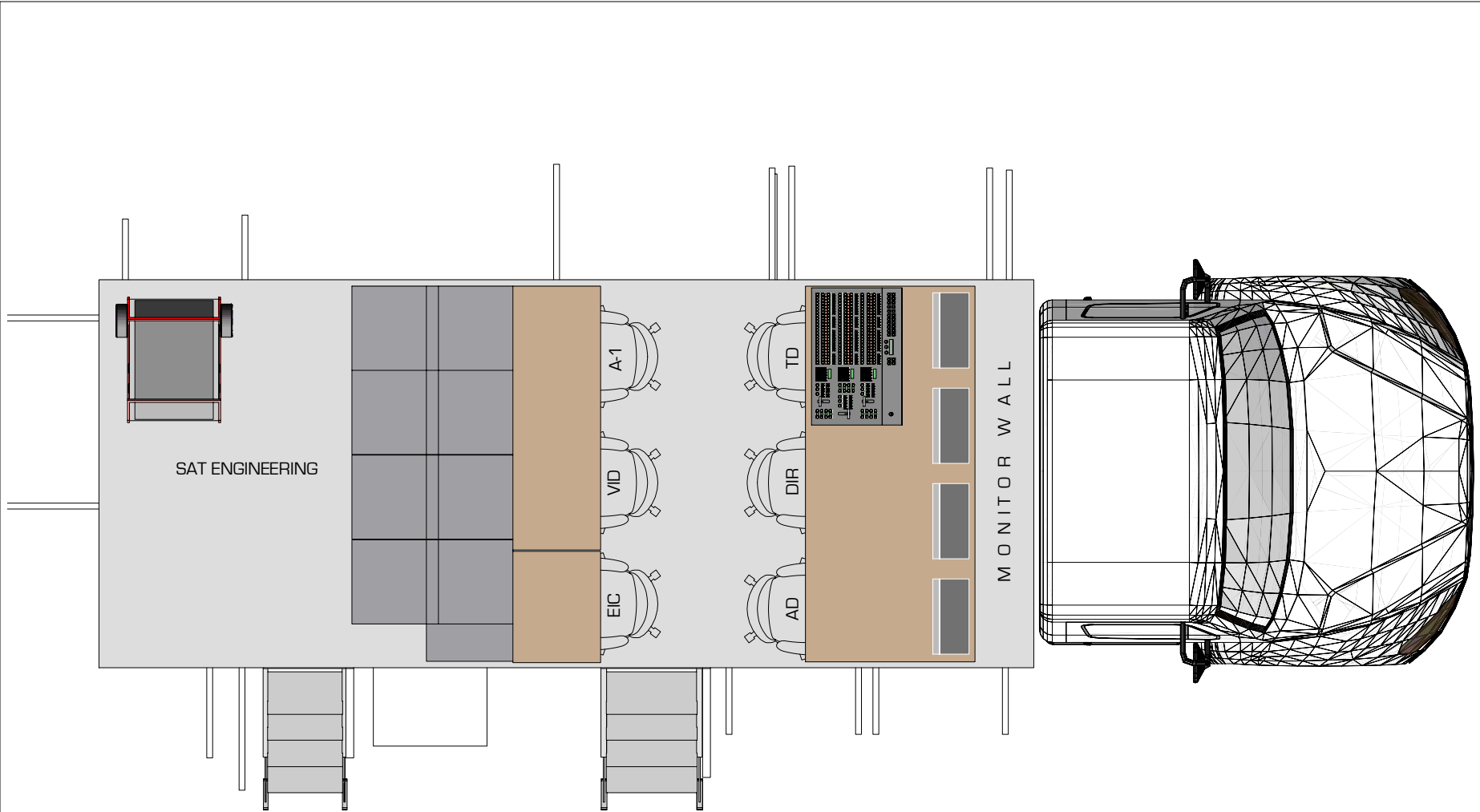
HDX-20 COASTAL-3  
KU UPLINK

FILE: HDX-20 UPLINK COASTAL-3 3D 2020.rvt  
PRODUCTION DRAWINGS BY: Joseph Foster

SHEET INFO:  
HDX-20 COASTAL-3 KU UPLINK  
MULT DIM SET  
TOP/SIDE

NOTES:

UPDATED:  
Date: 5/26/20  
Time: 4:01:36 PM  
Ver.001



| # | LOCATION | NAME: |
|---|----------|-------|
| 1 | A-1      |       |
| 2 | SHADER   |       |
| 3 | EIC      |       |
| 4 | TD       |       |
| 5 | DIR      |       |
| 6 | AD       |       |

3 HDX-20 COASTAL-3 TNDV 3D 2020  
Scale: 1" = 1'-0"



LMG  
515 Brick Church Park Drive  
Nashville TN 37207

HDX-20 COASTAL-3  
KU UPLINK

# HDX-20 COASTAL-3 KU UPLINK

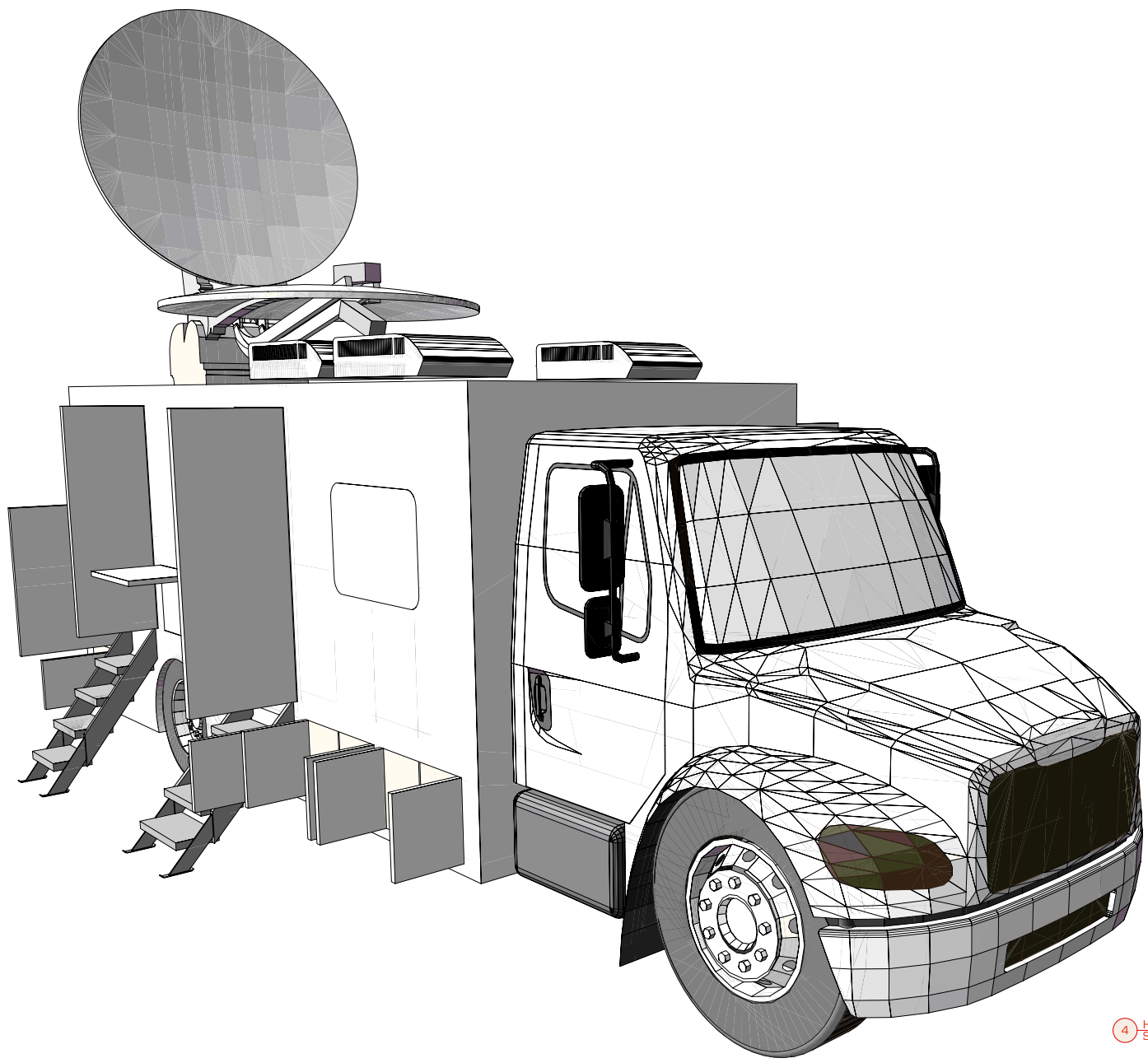
FILE: HDX-20 UPLINK COASTAL-3 3D 2020.wk  
PRODUCTION DRAWINGS BY: Joseph Foster

SHEET INFO:  
HDX-20 COASTAL-3 KU UPLINK  
FLOOR PLAN

NOTES:

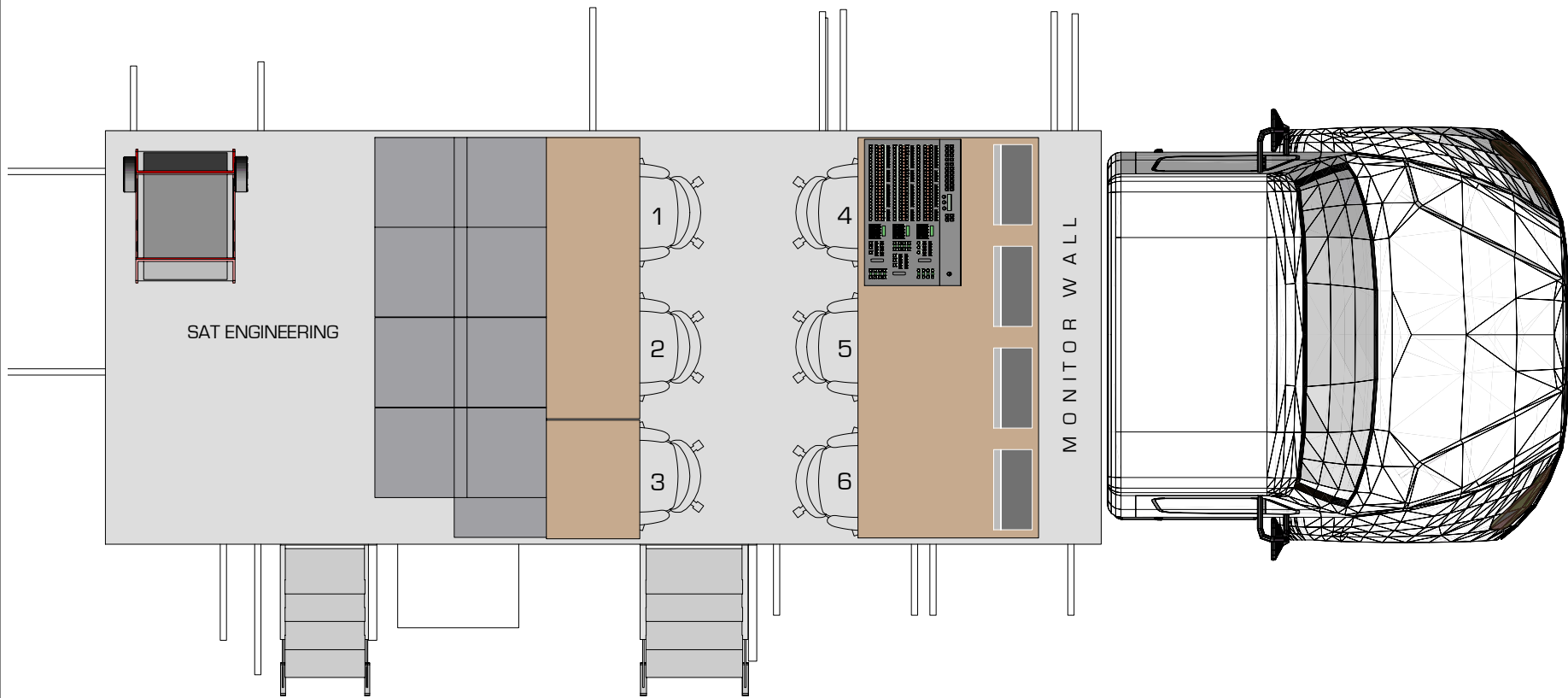
UPDATED:  
Date: 5/26/20  
Time: 4:02:02 PM

Ver.001



4 HDX-20 COASTAL-3 TNDV 3D 2020  
Scale: 1:36

|  |  |
|--|--|
|  |  |
|  |  |
|  |  |
|  |  |
| <p>LMG<br/>515 Brick Church Park Drive<br/>Nashville TN 37207</p>                          |  |
| <p>HDX-20 COASTAL-3<br/>KU UPLINK</p>  |  |
| <p><b>HDX-20 COASTAL-3<br/>KU UPLINK</b></p>   |  |
| <p>FILE: HDX-20 UPLINK COASTAL-3 3D 2020.rvt<br/>PRODUCTION DRAWINGS BY: Joseph Foster</p> |  |
| <p>SHEET INFO:<br/>HDX-20 COASTAL-3 KU UPLINK<br/>ISOMETRIC VIEW</p>                       |  |
| <p>NOTES:</p>  |  |
| <p>UPDATED:<br/>Date: 5/26/20<br/>Time: 4:02:18 PM<br/>Ver.001</p>                         |  |



PRODUCTION SEATING ASSIGNMENTS

|   |
|---|
| 1 |
| 2 |
| 3 |
| 4 |
| 5 |
| 6 |

3 HDX-20 COASTAL-3 TNDV 3D 2020  
Scale: 1" = 1'-0"



LMG  
515 Brick Church Park Drive  
Nashville TN 37207

HDX-20 COASTAL-3  
KU UPLINK

HDX-20 COASTAL-3  
KU UPLINK

FILE: HDX-20 UPLINK COASTAL-3 3D 2020.rvt  
PRODUCTION DRAWINGS BY: Joseph Foster

SHEET INFO:  
HDX-20 COASTAL-3 KU UPLINK  
BLANK FLOOR PLAN

NOTES:

UPDATED:  
Date: 5/26/20  
Time: 4:01:44 PM  
Ver.001